



“YOUR DREAM FACADE SYSTEMS”

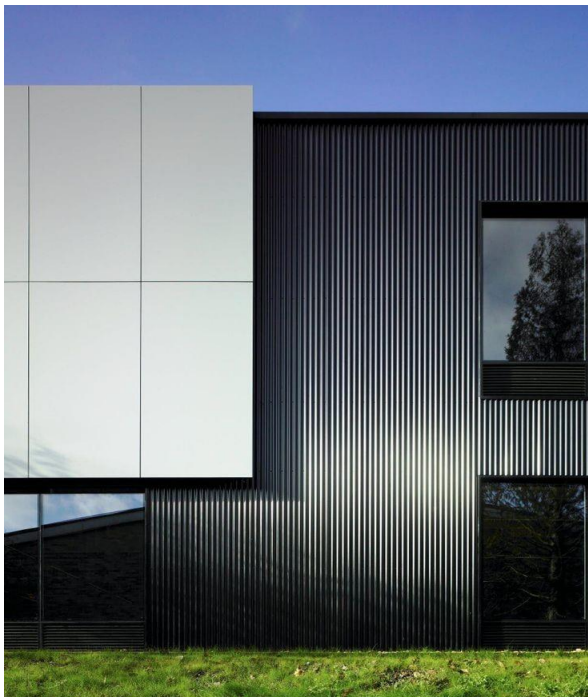
“HAYALİNİZDEKİ CEPHE SİSTEMLERİ”

[steelbond.com.tr](http://steelbond.com.tr)

## STEELBOND ADVANTAGES

- Possibility of production in project-specific dimensions and dimensions
  - Fabricated production in special sizes
    - Ease of assembly
    - Shipping advantage
  - Production in desired form and size is possible - FACADE SYSTEM ACCORDING TO YOUR IMAGINATION
    - Ensuring time-speed-aesthetics-color coordination
- Waste is zero percent. Production in special sizes according to the location and project.
- It is economical, a more aesthetic appearance can be achieved at an affordable price.
  - Insulation is provided with A1 Fireproof Rockwool plates
    - Can be preferred in interior or exterior shell coatings
    - Carrier system options can be determined according to the project.
- It can be made with a hidden screw or external screw system depending on the form.
- No need for complementary detail products such as silicone-sealant-wick (ELIMINATION OF FACADE FOULING. SILICONE AND MASTIC CAUSE FACADE FOULING.)
- Edge corner-edge-door-joint-window etc. with detail accessories that are specially bent according to the angle, project and location. making combinations
  - Can be preferred in any RAL... color.
- Depending on the height of the building, omega or steel profile systems may be preferred for the static system.
  - Guaranteed not to fade or rust. AVERAGE warranty period of 5-10-15-20 years, depending on the proximity of the buildings to the sea.
  - Coating properties such as PVDF, Polyester and Plastisol paint can be preferred according to the geographical conditions where the products are located.
    - Rich surface pattern options and alternatives
- It is possible to produce 0,30 - 0,40 - 0.50 MM – 0.60- 0.70 – 0.80 – 1.00- 1.20 MM- 1.50 MM – 2.00 MM- 2.50 MM thicknesses according to product features.
  - Inventory cost is zero
- Anti-condensation paint can be used or vapor stabilizing/cutting materials can be used.
- It can be preferred for interior and exterior cladding in stores, showrooms, offices and building systems.
  - Closures are made with special detail accessories. Sealing is provided.
- When rockwool is used on the back surface of Steelbond facade panel, it is in Fire class A1 Fireproof standards.
  - There is no breakage or crack propagation.
  - Vibration and sound absorption feature is provided. (THE MAY VARY DEPENDING ON THE THICKNESS OF THE THICKNESS)
    - Yield limit (yield stress) values are low.

- There is no corrosion problem. In this regard, proper selection of matrix and material is of great importance. Its strength is higher than the form.
  - Elongation at break is low.
  - Their fatigue resistance is low.
  - Weight savings are achieved.
- It has the advantage of horizontal or vertical application in different directions.
- Tensile, compression, shear and bending strength values are high.
  - Drilling and cutting operations are easy.
- Mechanical strength, pressure, tensile, bending, impact strength,
  - Fatigue strength, wear resistance,
  - High corrosion resistance,
  - Breaking strength is low.
- High temperature resistance, maximum 650-700 degrees.
  - Thermal conductivity or thermal resistance,
  - Electrical conductivity or electrical resistance,
- Acoustic conductivity, sound retention or sound absorption,
  - Rigidity,
  - Weight, transportation advantage
  - Appearance according to color options,
- Can be made with perforation features. It is difficult with composite products.
  - Need for a small workshop
- Detail solutions of sensitive and critical detailed and important works such as ventilation, air conditioning, mechanical and electrical installations can be facilitated.



## SPECIFICATIONS OF THE MATERIALS PRODUCED

### NATURAL GALVANIZED



### PAINTED GALVANIZED STEEL



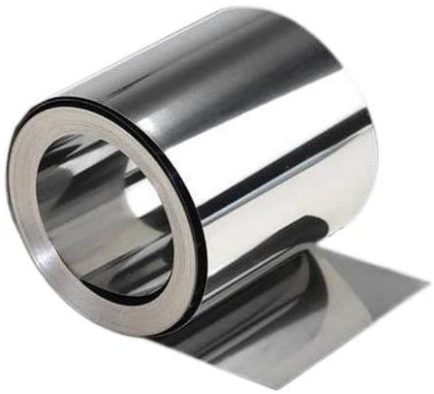
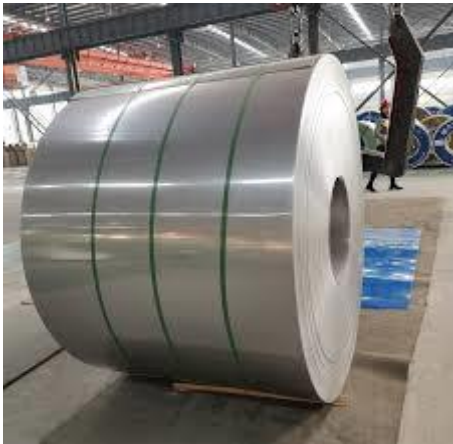
### NATURAL ALUMINUM



### PAINTED ALUMINUM



**STAINLESS STEEL**



**CORTEN STEEL**



**TITANIUM**



**ALUZING**



## **STEELBOND APPLICATION AREAS**

Our products can be preferred in all types of buildings with their wide range of usage advantages in interior, exterior facade and ceiling coverings and can be applied very easily.

It can be used in factories, social buildings, cold storages, sports facilities, swimming pools, stadiums, residences, shopping malls, agricultural and livestock buildings.

Interior and exterior shell cladding of industrial buildings

In office, living room, corridor areas,

On or behind the balcony

In suspended ceiling coverings

In wall and ceiling coverings of hygienic wet areas such as kitchens, bathrooms and toilets,

Rooms and halls, conference halls, meeting room facades, ceiling coverings

Stairwells, elevator shafts, elevator exterior entrances.

Delicatessen production, drying and stock areas,

It can be preferred in facade covering areas of schools, hospitals and administrative buildings.

Milk and dairy products factories,

Ice cream and milk dessert production facilities,

Dairy product cold chain and dealer areas,

Market and Hypermarket interior and exterior wall and ceiling coverings

Product acceptance and shipment areas,

Server centers, Telephone switchboards,

Satellite stations, transmitters,

electronics factories,

Interior and exterior facades and ceiling systems of restaurants, patisseries, cafes, fast food halls

In facade coverings behind advertising signs

Our products can be used in gyms.

In exterior cladding of old buildings,



APPLICATIONS PICTURES

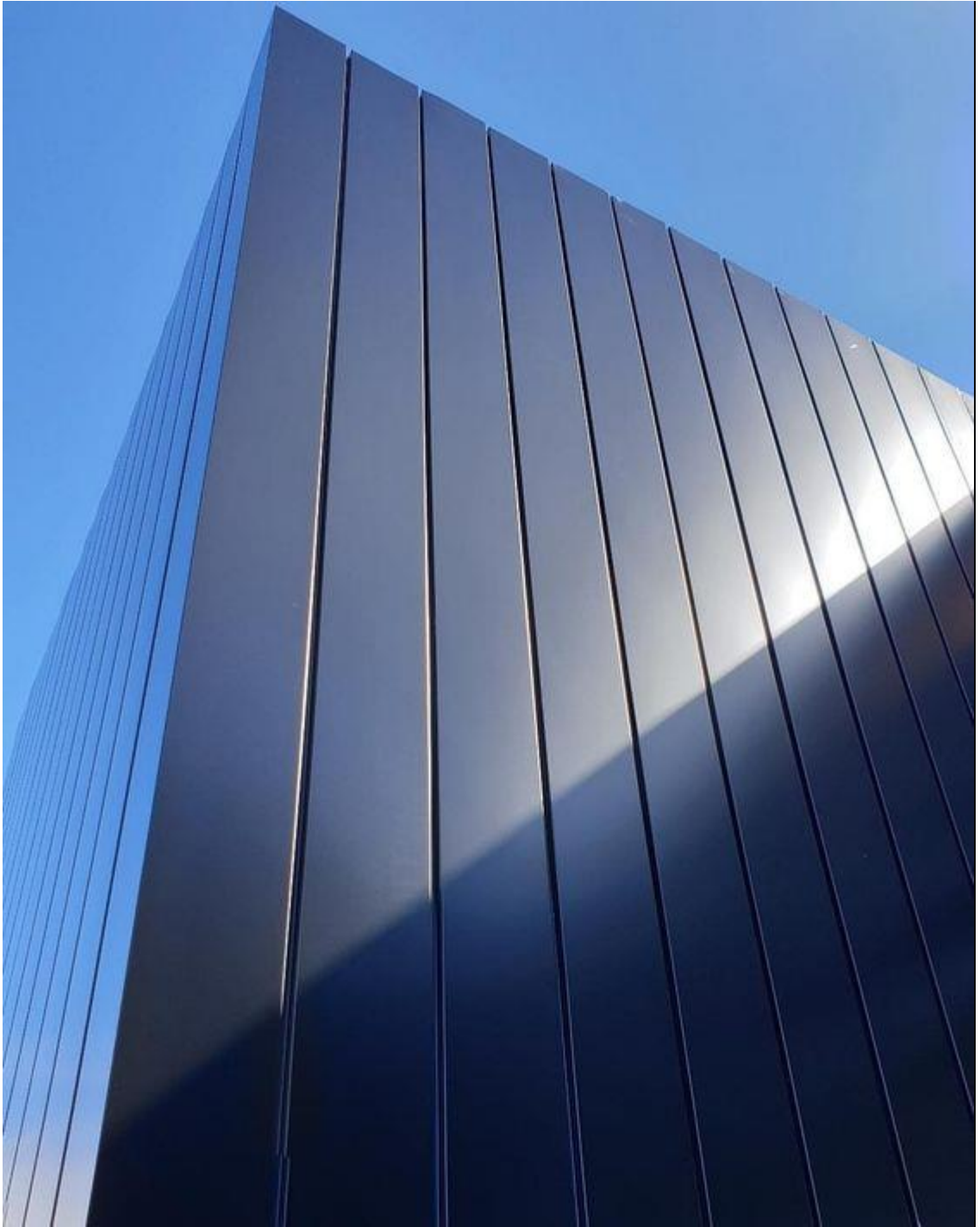






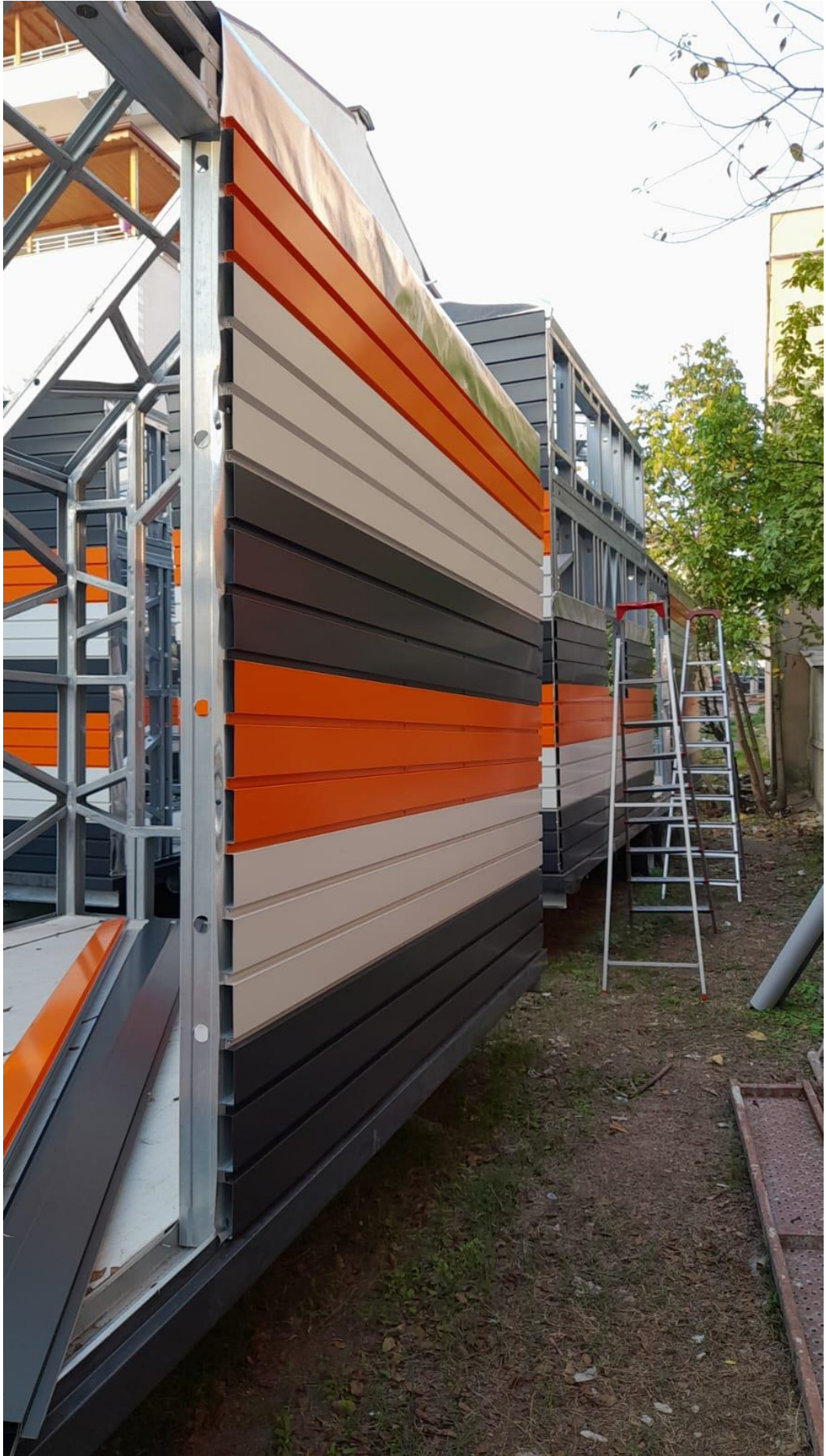
















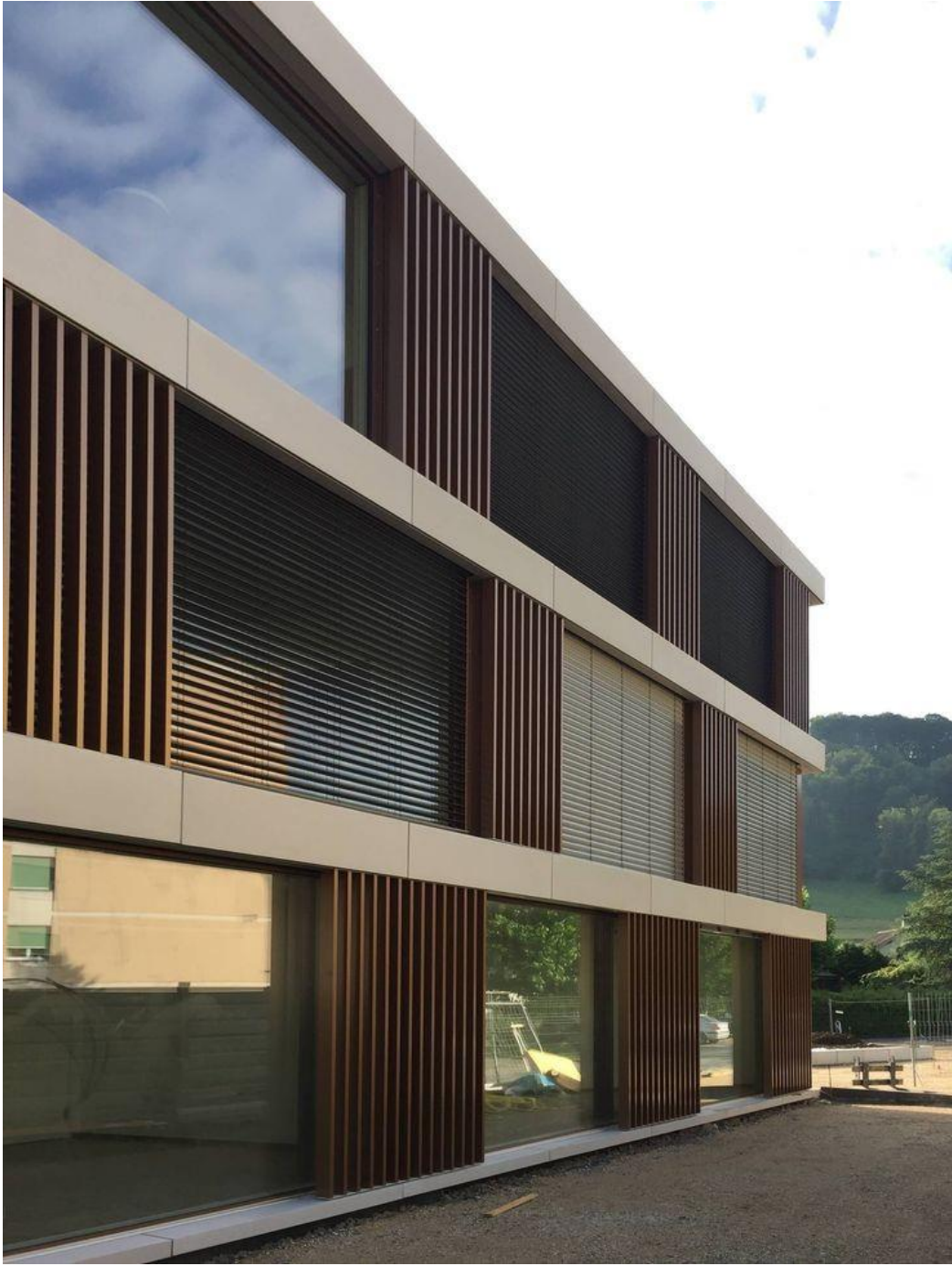






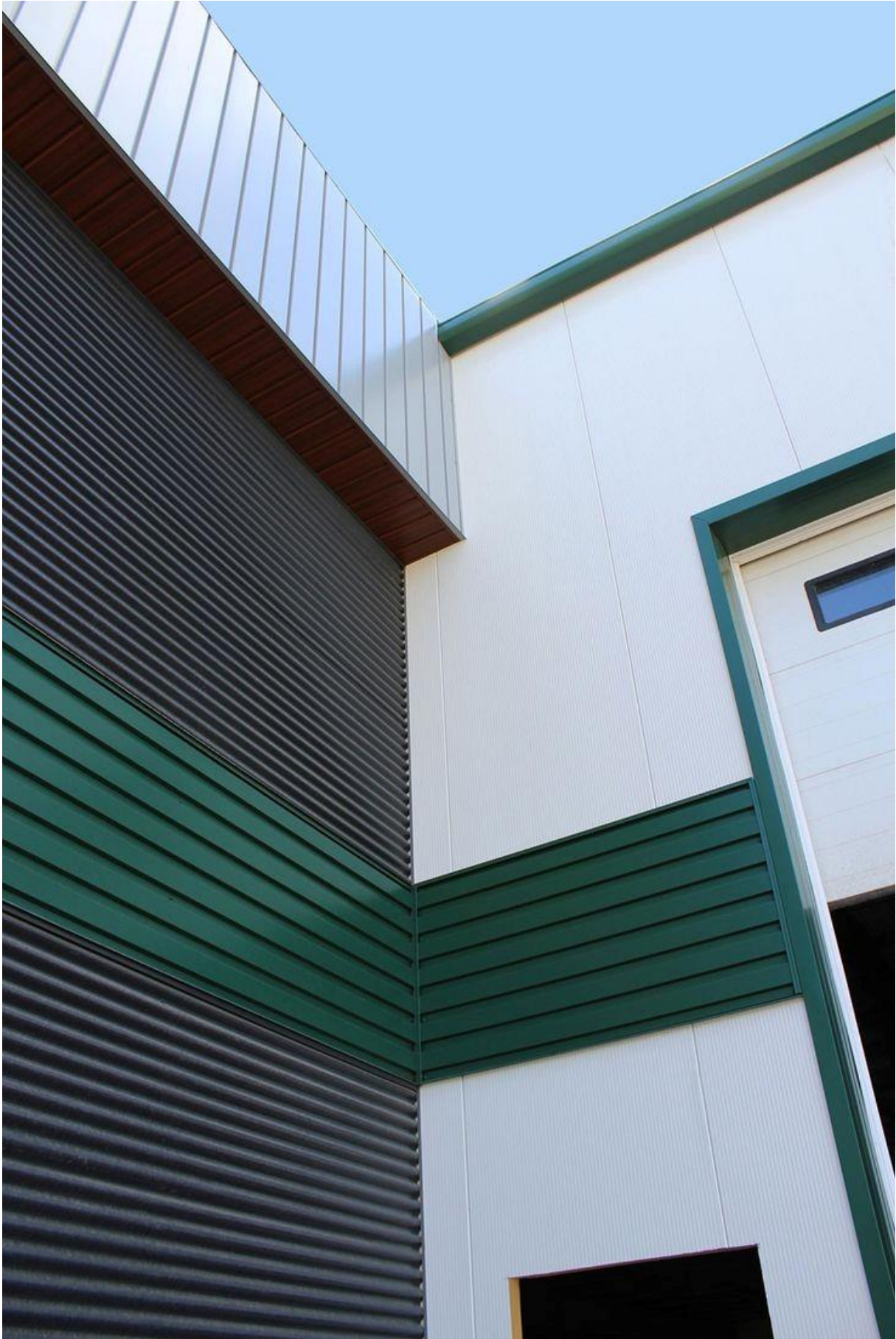








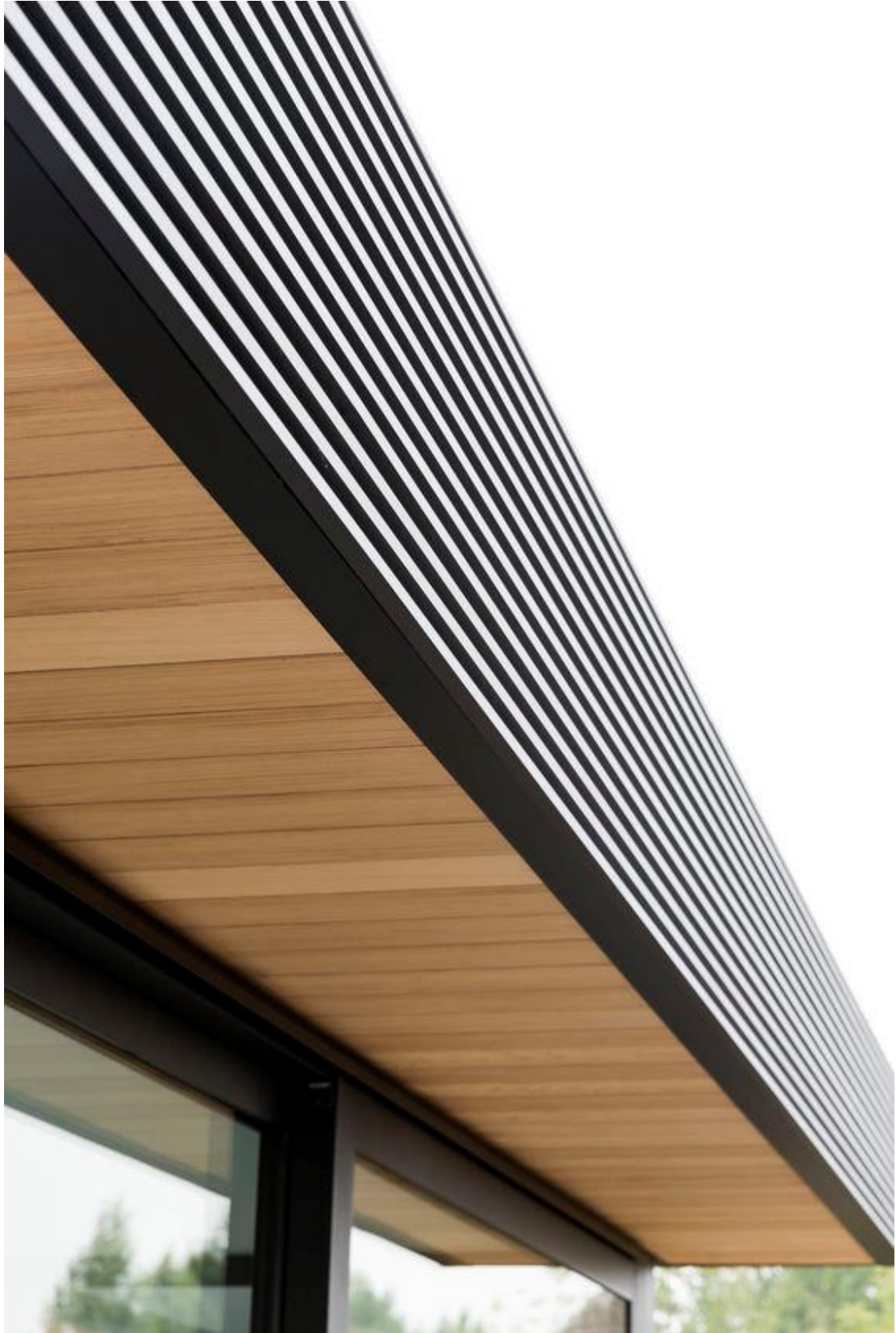


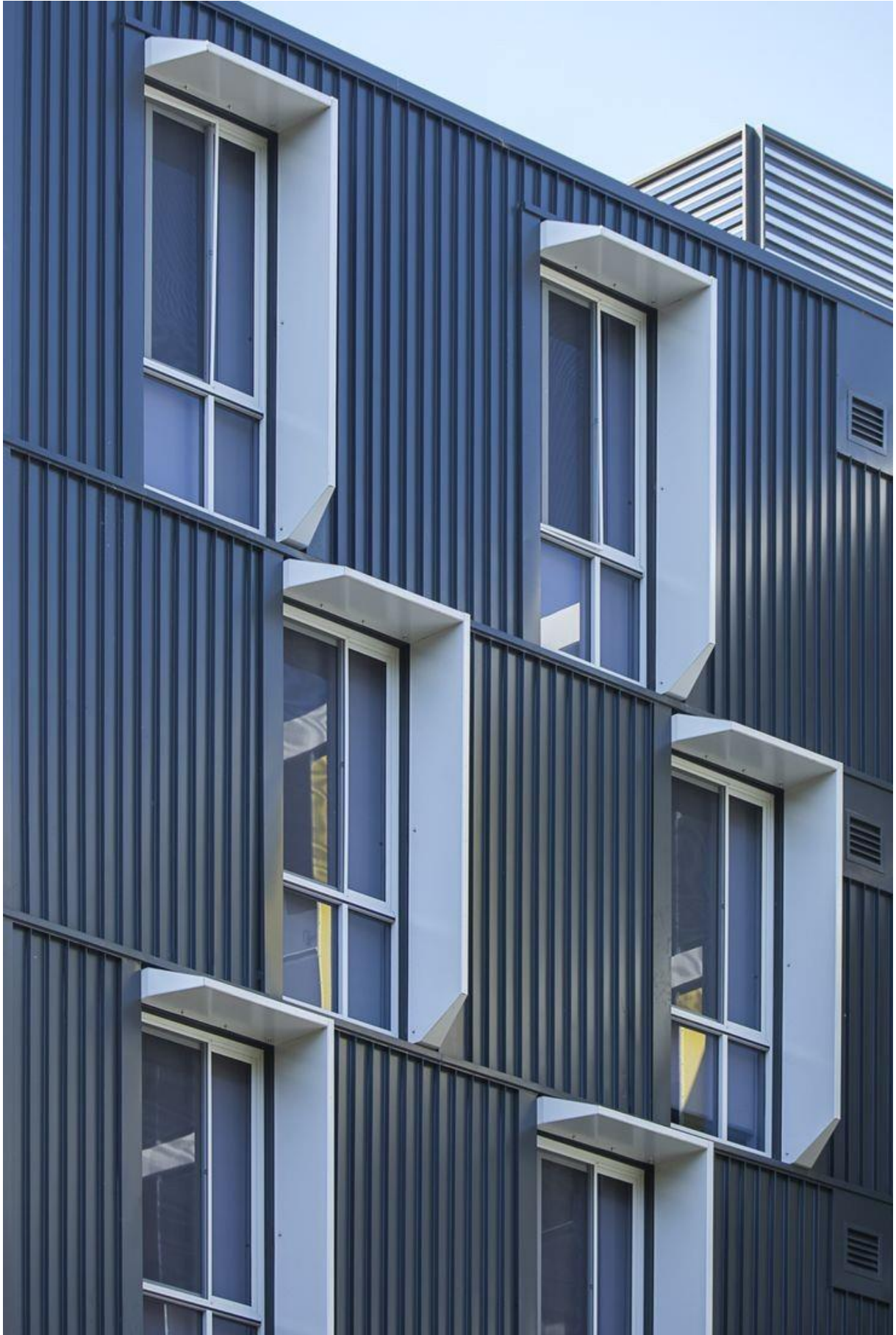














## HEAD OFFICE

Eyüp Sultan Mahallesi Kızılay Caddesi Damatris Life

C Blok No:71 Daire: 8 Kat: 4

SANCAKTEPE – İSTANBUL – TÜRKİYE

**Telephone GSM :** +90 543 464 10 34 and WhatsApp

**Telephone GSM :** +90 536 015 81 83 and WhatsApp

**E-mail:** info@steelbond.com.tr

**Head Office Sales :** info@steelbond.com.tr

**Account:** muhasebe@steelbond.com.tr

**Architect :** kadir@steelbond.com.tr

**Manager :** hakan@steelbond.com.tr

## FACTORY

Yalova Makine İhtisas OSB Kılıç Bölgesi Çiftlikköy / Yalova

**steelbond.com.tr**

